

**A selection of Green Network  
planning case studies**

(May 2011)

# Contents

## 1. East London Green Grid

Regional and  
Strategic Plan Level

- 2. Cambridgeshire Sub-Region Green Infrastructure Strategy
- 3. Aberdeen Proposed Local Development Plan
- 4. Plymouth Green Infrastructure Delivery Plan

Local Development  
Plan Level

- 5. South Lanarkshire Green Network Quality Design Guide
- 6. Glasgow East End Local Development Strategy
- 7. Milton Keynes South Midlands: Green Infrastructure by Design

Supplementary Planning  
Guidance

- 8. Natural Economy Northwest Guide to planning Green Infrastructure at the sub-regional level
- 9. Natural England GI Guide

Other Useful  
Guidance

These Green Infrastructure planning examples have been selected to highlight some elements of good practice. It is unlikely that one size will fit all.

# East London Green Grid

## Regional and Strategic Plan Level

ELGG Primer: <http://www.designforlondon.gov.uk/uploads/media/ELGGprimer.pdf>

ELGG SPG: <http://www.london.gov.uk/thelondonplan/docs/spg/spg-east-lon-green-grid.pdf>

ELGG Area framework (link to 1 of 6): <http://www.designforlondon.gov.uk/uploads/media/ELGGArea1.pdf>

- Strongly articulated locally-appropriate vision:

*A network of open space, river and other corridors connecting urban areas to the river Thames, the Green Belt and beyond to provide attractive, diverse landscapes and green infrastructure managed to the highest standards for people and wildlife.* (East London Green Grid Supplementary Planning Guidance, p. 15).

- Identifies existing green grid assets and strategic green grid opportunities, all of which are illustrated spatially
- Spatial strategy supported by Supplementary Planning Guidance (Annex 1 of the East London Green Grid Supplementary Planning Guidance, p.53-56 provides an overview)
- Strategy supported by 6 area framework reports, which provide detail on the individual site-specific projects to be taken forward (link provided to one example above, others can be found by changing the number at the end of the link to: 2, 3, 4, 5, or 6)



# Cambridgeshire Sub-Region Green Infrastructure Strategy

**Local Development  
Plan Level**

Cambridgeshire Sub-region Green Infrastructure Strategy

[http://www.cambridgeshirehorizons.co.uk/documents/publications/horizons/green\\_infrastructure\\_strategy.pdf](http://www.cambridgeshirehorizons.co.uk/documents/publications/horizons/green_infrastructure_strategy.pdf)

Map:

[http://www.cambridgeshirehorizons.co.uk/documents/publications/reference/green\\_infrastructure\\_map.pdf](http://www.cambridgeshirehorizons.co.uk/documents/publications/reference/green_infrastructure_map.pdf)

- Identifies and provides names for 22 green networks in the Cambridgeshire sub region;
- Also identifies 20 major new or enhanced greenspace projects that will form key strategic “hubs” or destinations within green network;
- Communicates a clear and engaging mapped-based vision for green networks at the sub-regional scale while also communicating how green networks are conceived and delivered at the town and local scales.



KEY	
	Cambridge Planning Sub-region
	New Green Corridor
	Existing Green Corridor Enhanced
	Existing and Proposed Green Hub
	Major New Green Infrastructure Site
	Historic Cultural Centre
	Proposed Green Bridge
	Proposed Bridge Crossing
	Accessible Green Infrastructure (>20ha)
	Green Infrastructure (>20ha)
	Major Development Site (>100ha)
	FDC Major Development Sites (>100ha)
	Settlements Over 5000
WIDER AREA INITIATIVES	
	I - Forest of South Cambridgeshire
	II - South East Cambridgeshire Claylands
	III - West Cambridgeshire Claylands
	IV - South East Cambridgeshire Chalklands
	V - Heath Protection and Restoration Project (West)
	VI - Heath Protection and Restoration Project (East)

# Aberdeen Proposed Local Development Plan

Local Development  
Plan Level

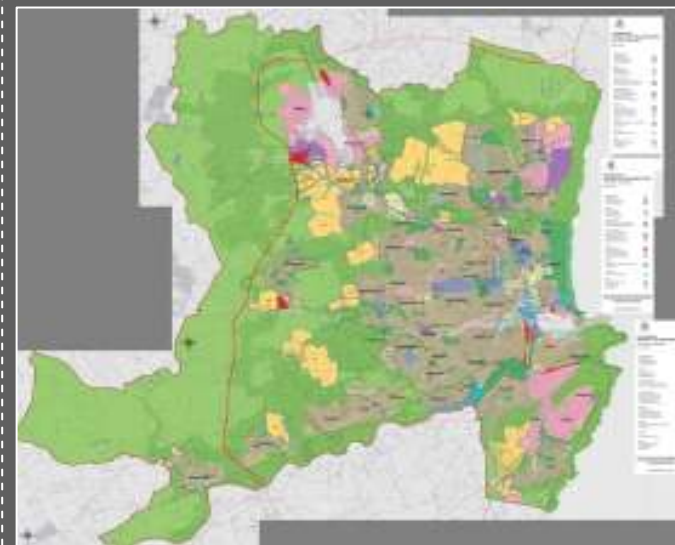
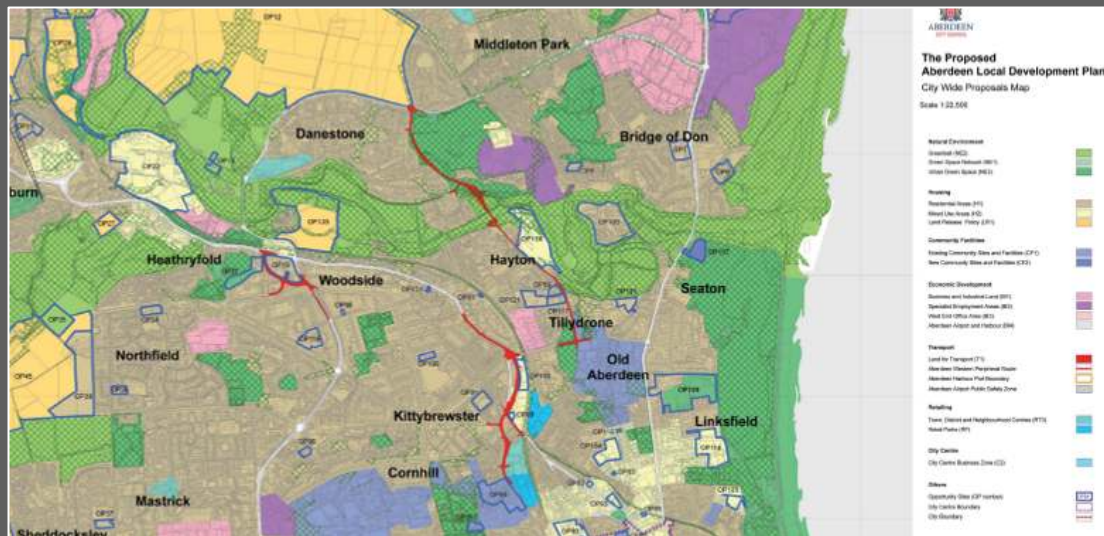
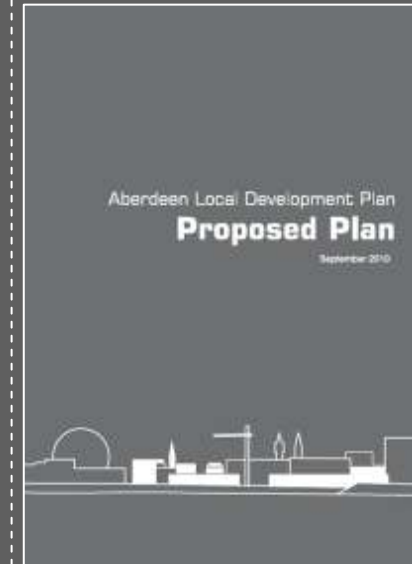
Aberdeen Local Development Plan (Proposed Plan, September 2010) and Proposals Maps:

- <http://www.aberdeencity.gov.uk/nmsruntime/saveasdialog.asp?IID=31978&SID=14413>
- [http://www.aberdeencity.gov.uk/Planning/ldp/pla\\_aldp\\_document\\_map.asp](http://www.aberdeencity.gov.uk/Planning/ldp/pla_aldp_document_map.asp)

- Existing greenspace network assets spatially defined on the proposals maps, including green network corridors identified within sites for development.
- Additional proposals maps identify a number of green network sites and routes, including: core paths, aspirational core paths, SSSIs, LNRs, district wildlife sites, linear district wildlife sites, coastal management areas, and conservation areas.
- Supported by Green Network-specific policy:

*The City Council will protect, promote and enhance the wildlife, recreational, landscape and access value of the Green Space Network. Proposals for development that are likely to destroy or erode the character or function of the Green Space Network will not be permitted. Where major infrastructure projects or other developments necessitate crossing the Green Space Network, such developments shall take into account the coherence of the network. In doing so measures shall be taken to allow access across roads for wildlife and for access and outdoor recreation purposes. Masterplanning of new developments should determine the location and extent of the Green Space Network within these areas.*

*Development which has any impact on existing wildlife habitats, or connections between them, or other features of value to natural heritage, open space, landscape and recreation must be mitigated through enhancement of [the] Green Space Network. (Policy NE1 – Green Space Network, page 36-37)*



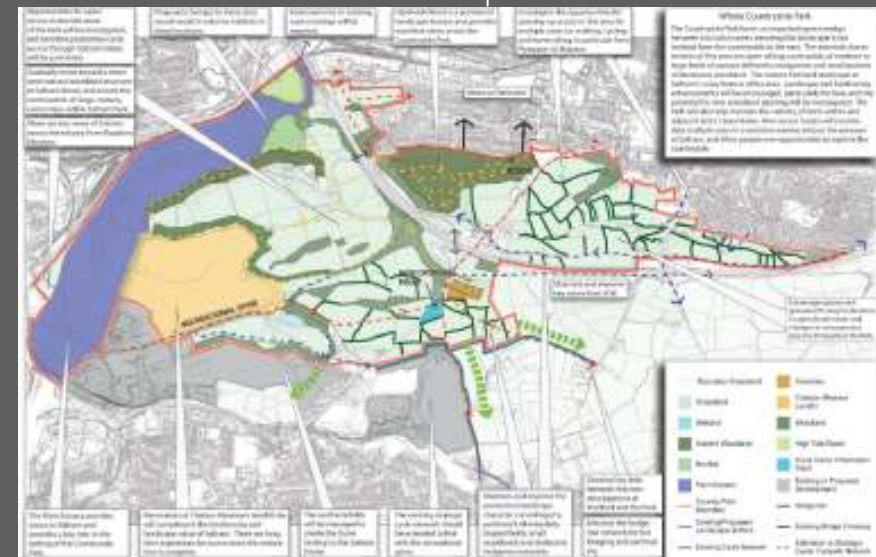
# Plymouth Green Infrastructure Delivery Plan

Local Development  
Plan Level

Plymouth Green Infrastructure Delivery Plan:

[http://www.plymouth.gov.uk/green\\_infrastructure\\_delivery\\_plan.pdf](http://www.plymouth.gov.uk/green_infrastructure_delivery_plan.pdf)

- Provides a strategic green infrastructure network vision and strategy for the greater Plymouth area
- The strategic green infrastructure network strategy is illustrated diagrammatically, identifying existing GI assets (key sites and links) and GI opportunities: blue infrastructure improvement areas, biodiversity and landscape improvement areas, and a number of site-specific projects
- More detailed proposals have been developed for each site-specific GI network project
- The GI functions and benefits are identified for each green infrastructure network project from a common list of 10: low carbon solution; inward investment, education, biodiversity enhancement, sustainable transport, climate-change adaptation, health and well being, improving the quality of place, food production, increased activity



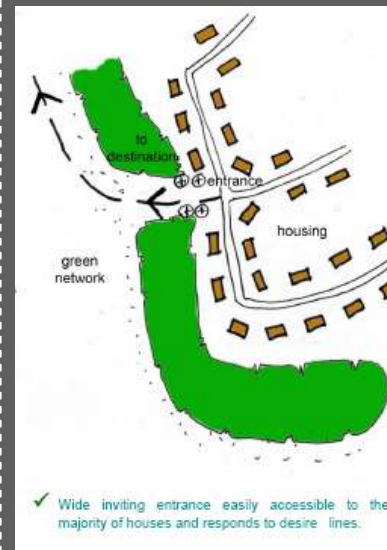
# South Lanarkshire Green Network Quality Design Guide

## Supplementary Planning Guidance

South Lanarkshire Green Network Quality Design Guide:

[http://gcvgreennetwork.gov.uk/component/option,com\\_docman/itemid,78/gid,59/task,doc\\_download/](http://gcvgreennetwork.gov.uk/component/option,com_docman/itemid,78/gid,59/task,doc_download/)

- This document aims to secure delivery of well-designed green networks through the planning process;
- It sets out 6 themes that should be addressed by all green network proposals;
- It provides well-illustrated design guidance showing what is expected from developers with regards green network implementation and future management;
- The document contains a green network quality assessment toolkit to aid planners in reaching clear development management decisions regarding the quality of green network proposals.



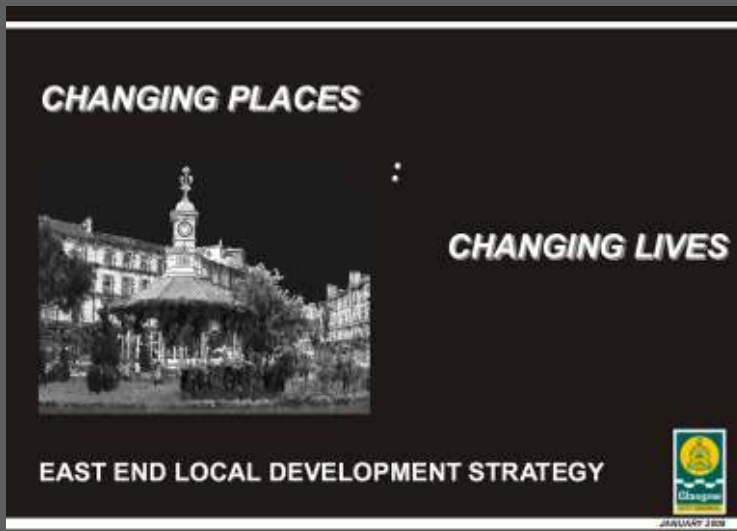
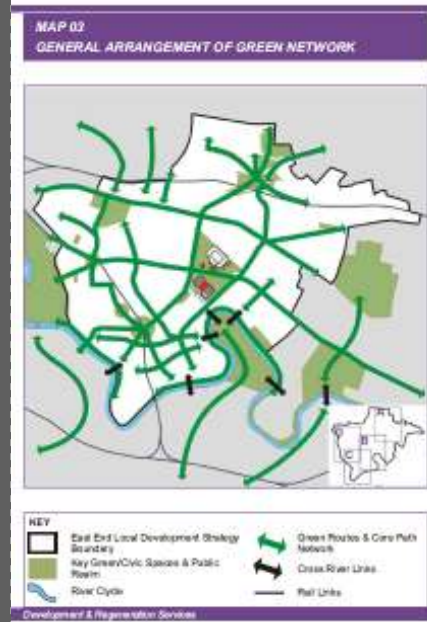
# Glasgow East End Local Development Strategy

## Supplementary Planning Guidance

Glasgow East End Local Development Strategy:

<http://www.glasgow.gov.uk/NR/rdonlyres/AF0E7C52-1258-4BF4-A435-B79A81501DB4/0/EELDS.pdf>

- This document is area specific SPG produced in support of the Glasgow City LDP
- Green network strategy is integral to the vision for the area and this is communicated in a visually engaging document.
- Supporting policy seeks to combine traditionally separate policy themes of open space, drainage, paths and connection to public transport into a single policy for the delivery of an Integrated Infrastructure Framework for development.
- The green network is mapped diagrammatically across the plan area with detailed, spatially specific, proposals shown for 5 key areas or “development hubs”.



**POLICY 16.** Developers will be expected to work with the Council to deliver its Integrated Infrastructure Framework. Developers will be expected to bring forward Masterplans and other development proposals which contribute to this framework by:

- establishing a green network of quality open spaces and quality paths,
- establishing an integrated network for walking and cycling paths linked to the use of public transport
- creating a regional SUDS scheme and strategic conveyance routes
- upgrading existing road & path network



quality path

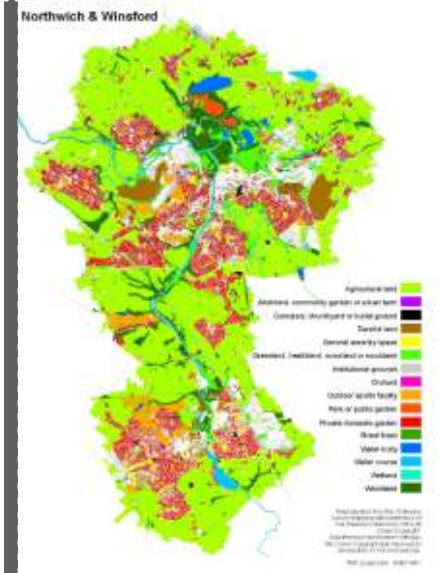
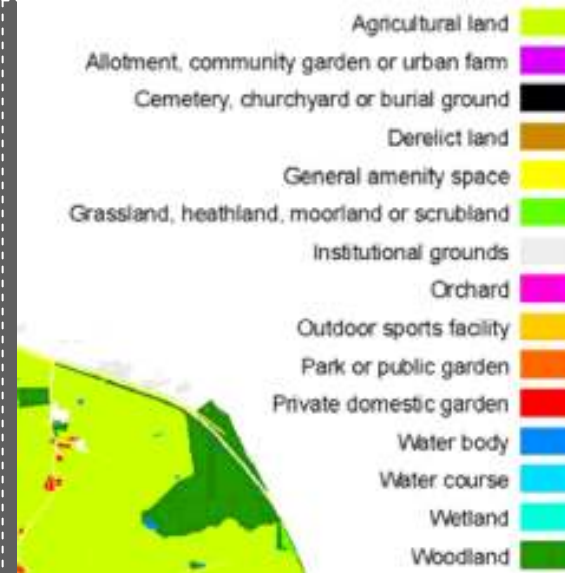
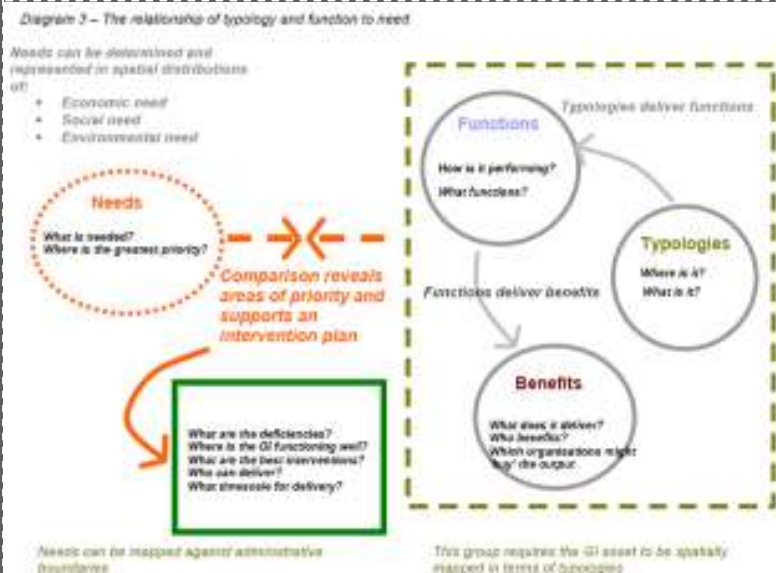


# Natural Economy Northwest

<http://www.naturaleconomynorthwest.co.uk/download.php?A%20Guide%20to%20Planning%20Green%20Infrastructure%20At%20The%20Sub-regional%20Level%20-%20v3.1.pdf>

- Promotes a holistic approach to green infrastructure planning and strategy development, suggesting an analysis of functions and benefits based on a green infrastructure typology. p.5
- Helpful section on the benefits of a multi-functional GI approach, which highlights the economic arguments that can be made. p.8
- Identifies 8 principles for GI planning, design and implementation, and highlights the need for an iterative approach to strategy development (p.18):
  1. Identify and protect green infrastructure before development
  2. Engage diverse people and organisations from a range of sectors
  3. Linkage is key, connecting green infrastructure components with each other and with people
  4. Design green infrastructure systems that function at different scales and across boundaries
  5. Green Infrastructure activity must be grounded in good science and planning practice
  6. Fund green infrastructure up-front as a primary public investment
  7. Emphasise green infrastructure benefits are afforded to all; to nature and people
  8. Green infrastructure should be the framework for conservation.

## Other Useful Guidance



# Natural England GI Guide

## Natural England Green Infrastructure Guide:

<http://naturalengland.etraderstores.com/./NE176>

- Helpful sections on green infrastructure planning and on green infrastructure considerations in development management decisions, albeit with reference to the English planning system. Promotes an iterative process to GI planning.
- Useful illustrations that help communicate green infrastructure and the idea of multi-functionality.
- Links to green infrastructure case studies and examples of GI planning policies.
- Helpful glossary of green infrastructure terms: Green infrastructure, blue infrastructure, multi-functionality.

## Other Useful Guidance



Habitat provision and access to nature



Access, recreation, movement and leisure



Landscape setting and context



Flood attenuation and water resource management

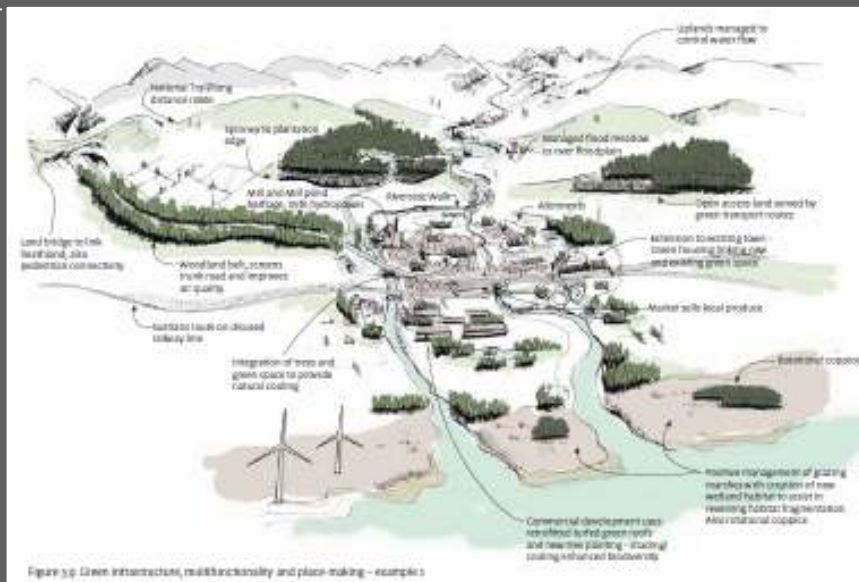


Figure 3.9: Green infrastructure, multifunctionality and place-making – example 3



## Green Infrastructure Guidance

[www.naturalengland.org.uk](http://www.naturalengland.org.uk)

